

# TOWLINE

THE OFFICIAL NEWSLETTER OF THE DANNY

ISSUE 3 - MARCH 2018

2018 is going to be our busiest year for cruises and already bookings are looking healthy and we are hoping to welcome people for their first time on The Danny.

**Cruise tickets are now on sale at [www.thedanny.co.uk](http://www.thedanny.co.uk)**



**THE  
DANNY**





## A Message from our Director **Andrea Ward**

Following an amazing first season in 2017, where we met a few unexpected challenges head on and delivered a first class service to our first passengers, a statement backed up by lovely reviews and notes of thanks, we are more prepared than ever for our 2018 season, with an exciting schedule of cruises taking in the docks and river of Liverpool and the canals and waterways of Cheshire.

Awareness of our lovely little steamer has most definitely been raised (along with plenty of steam), confirmed by the number of bookings already coming in from both individuals and coach tour operators, for which we are extremely grateful and delighted.

None of this would be possible without the continued commitment and support of all our exceptional volunteers, we literally couldn't do it without them. Thank you to each and every one of you amazing people...

This brief message wouldn't be complete without saying another big thank you to our members and supporters, your continued support has been, and remains, vital to the future of the Danny and we hope we will be welcoming you and new supporters and members aboard this coming year.

## The Danny receives Engineering Heritage Award by The Institute of Mechanical Engineers



Previous winners of Engineering Heritage Awards include Alan Turing's Bombe at Bletchley Park, the E-Type Jaguar and Concorde, the fastest ever airliner. In Northern

England, past winners include Craggside, the first house in the world to be lit using hydro-electric power, and the Anderton Boat Lift, another engineering achievement in the history of the Cheshire canals.

The Danny was the 114th recipient of the award.

Gareth Jones, Regional Chair of the Institution of Mechanical Engineers, who made the presentation on the ship, before it went into the winter maintenance period, said:

"The Danny is a beautiful coal-fired steam tug; a real survivor from an age when canals were the UK's trade arteries. Her two Liverpool-built steam engines and twin screws gave her the high manoeuvrability and power needed for work on canals and rivers.

"The ship has been on a quite a journey in recent years. From a complete wreck, it has successfully navigated itself to join the National Historic Fleet, the maritime version of Grade I listed building status,

alongside vessels of national importance such as the Cutty Sark.

"This award builds on that achievement and honours not just the hard work of the Liverpoolian shipwrights at the start of the 20th century, but also the efforts of the volunteers who have invested so much time and effort into restoring the ship to such a fantastic condition."

Dan Cross, Chairman of The Daniel Adamson Preservation Society said:

"Gaining the award is very important and momentous to us as it is recognition which relates to engineering and hopefully its future. We have preserved an engine for the future as well as a ship and all our volunteers and members are passionate about both."

- Note on The Institution of Mechanical Engineers - Established in 1847 and has some of the world's greatest engineers in its history books. It is one of the fastest growing professional engineering institutions. Headquartered in London, it has operations around the world and over 117,000 members in more than 140 countries working at the heart of the most important and dynamic industries such as the automotive, rail, aerospace, medical, power and construction industries.
- The Engineering Heritage Awards, established in 1984, aim to promote artefacts, sites or landmarks of significant engineering importance - past and present.



# Welcome Aboard! Membership Report

## Sheila Leonard Membership Secretary



I am pleased to say the active membership of the Daniel Adamson Preservation Society has now reached 359. We are also delighted to welcome 6 new members since our last Towline.

We hope you enjoy being a part of our society and look forward to you visiting the boat. If you have any friends, work colleagues or family who would like to join us let me know and I will send them a membership application form.

I hope those of you who have managed to join us on any of our cruises throughout the summer have enjoyed the experience of sailing on the Danny and I enjoyed meeting and chatting to a few of you on board too.

Just a reminder that membership renewals are due on 1st May and remain the same fee as last year (£25 for single membership and £30 for family membership.)

A lot of members pay by standing order but if you don't wish to do that you can send a cheque to me at 60 Halton Road, Runcorn, Cheshire WA7 5SB. If you need to chat about anything, you can call me on 01928 576967 or via email, [membership@danieladamson.co.uk](mailto:membership@danieladamson.co.uk)

Unfortunately, we still have 48 members not paid their membership for 2017. If you are one of those members who has not paid don't worry you can still pay by cheque or standing order and if you need a renewal form please call me. If payment is not received for 2017 or 2018 I will presume you do not wish to remain a member of our society and your name will be removed from our membership list.

Another reminder is to let me know your current/updated email addresses because Georgia our Publicity Director quite often sends out snippets of news, especially to members and we don't want any of you to miss out.

Don't forget if you have a bit of spare time and want to join our band of volunteers you will be very welcome, just contact me for a form or fill the form in on our website [www.thedanny.co.uk](http://www.thedanny.co.uk).

We have some important dates for members to put in their diaries. On 6th July we are holding a Members get together at Sutton Weaver Swing Bridge from 16.00 onwards. We will have a bar and barbecues ready, so you can bring your own food to barbecue. We are hoping to organise some entertainment and of course the Danny will be there too. Look out for

more information nearer the time.

On 30th September our AGM is being held at Anderton Boat Lift at 10.00 am – 13.00 pm. We hope a lot of our members will be able to attend at this iconic venue.

We have also got a couple of events where we will be taking our mobile displays and we hope that some of our members will be able to pop along and enjoy the day and give us some support. The first date is Sunday 25th June which is the Lymm Transport Festival also on Saturday/Sunday 21st/22nd July we will be having our mobile display at the Anderton Transport Festival and hopefully in September the Halton Vintage Festival.

Don't forget we have a volunteer team who give talks and a presentation about the History of the Danny to different groups and societies. If you would like us to come along to your Society, please contact us for more information.

Hopefully we will see more of our members on our cruises during the summer. We have lots of new 90 min trips up the scenic River Weaver departing from Acton Bridge or Sutton Weaver and also from Ellesmere Port. We have also got planned some special cruises round Liverpool Docks, Garston Docks and Cammell Lairds. These are filling up quickly so don't miss out on booking your seat. Book online on our website or contact me for more information.

### **NEW FOR 2018**

#### **Limited Edition Paperweights**



The Fundraising Team have commissioned a new paperweight –

“The Danny on the River Weaver”

**Members Price of £10.00 + p&p £1.00 each**

**Contact Sheila on 01928 576967  
to place your order**



## The Danny's Scottish Heritage

**John Hake**  
**Chief Electrician**

**My name is John Hake, I joined the Society in 2004 and am the Chief Electrician on the Danny.**

When the Ralph Brocklebank was being built the builder, John Jones, did what was normal for the day and source various ancillary equipment for the vessel from specialist manufactures and at the time the engineering expertise of Scotland was unrivalled.

Consequently the vessel was fitted out with some of Scotland's finest examples of Edwardian technical excellence.

First we have the two reversing engines, one on each main engine, that are basically steam driven rams operated from the engineers control panel. They work by rotating the wiper shaft which is fitted to the inboard side of the main engines and running their full length with the ends of this shaft connected to the Stephenson's linkage on the high pressure and low pressure steam valves and when operated will cause both sets of valves to change over and the main engine will reverse it's direction.

They were manufactured by Brown Brothers at Rosebank Ironworks in Edinburgh who's main expertise was ships steering gear and in latter years helped to develop the Denny Brown ships stabilizer system and the steam catapult for aircraft carriers.

The firm became part of Vickers group and then part of Rolls Royce Marine division and still manufacture ships stabiliser systems in Fife

The steam steering engine in the wheelhouse operates the steering gear which is a rod and chain system and connects the ship's wheel to the rudder, it is an example of Edwardian power steering that makes the turning of the ships wheel a lot easier for the helmsman.

The steering engine was made by Alley & MacLellan of Polmadie, Glasgow, who were ship builders and engineers making all kinds of marine auxiliary machinery.

The engineering part of the firm was sold off in 1918 and eventually became part of G & J Weir Ltd. the world renown pump maker, leaving Alley & MacLennan to concentrate on making their Sentinel steam wagons at Shrewsbury, when the orders for steam wagons ceased they moved to diesel

vehicles, the firm was acquired by Rolls Royce in 1956 and made diesel shunting engines.

In the engine room there is a pair of Drysdale centrifugal steam pumps, one for each engine, that circulate cooling sea water through the condensers to convert the exhausted steam from the engines back to water, which is then returned to the boiler by the boiler feed pumps operated by each engine.

Drysdale & Co manufactured pumps, presses and engines for all types of industry but specialised in centrifugal pumps, their manufacturing base was at the Bon-Accord Works in Fordneuk St. Glasgow, by 1956 they also had become part of G & J Weir Ltd.

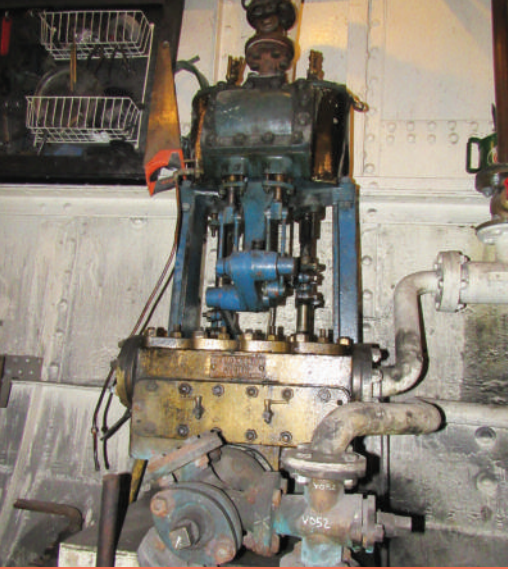
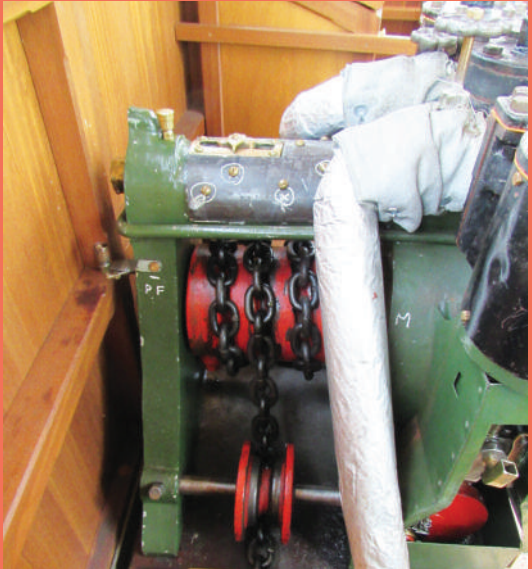
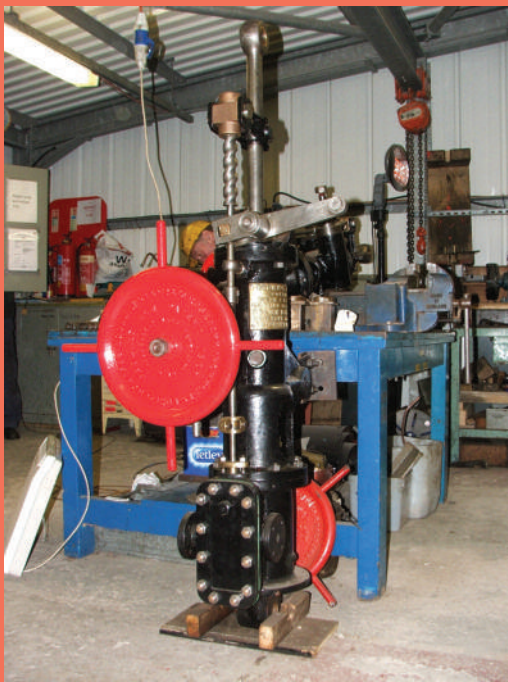
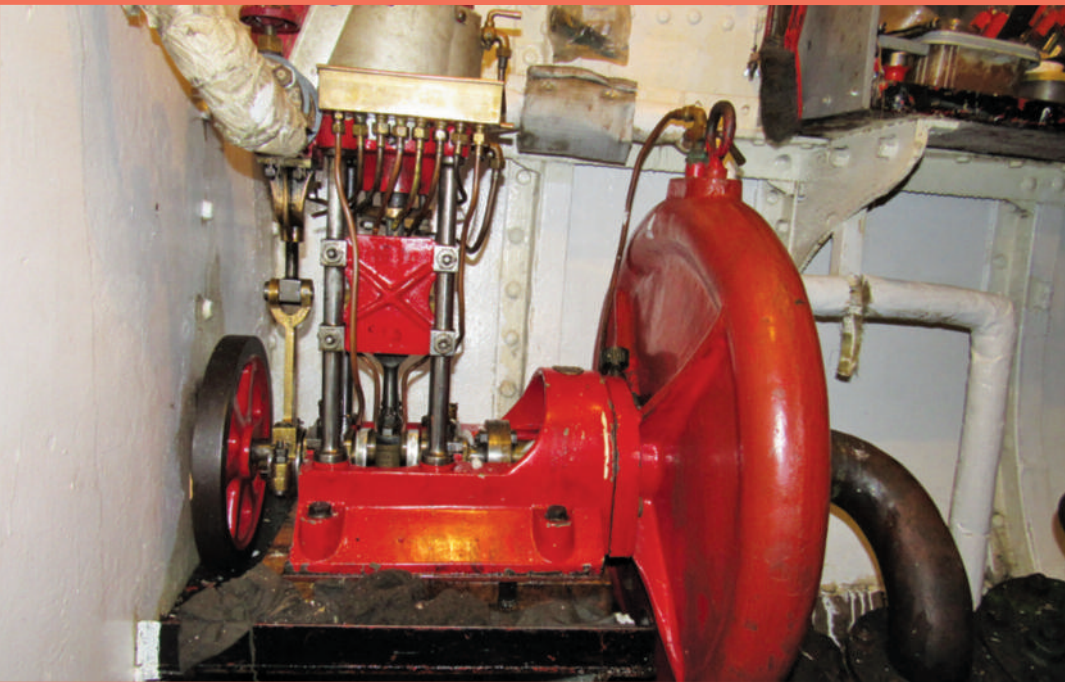
On the starboard side of the boiler room is the general service pump which is a vertical twin cylinder reciprocating type and as it's name implies it has a number of functions, it can be used as a bilge pump, fire hydrant pump, move water between the fore peak and aft peak fresh water tanks, top up the sanitary tanks and if needed it can take over the of the work of the Drysdale centrifugal pumps.

This pump was manufactured by Thomas Lamont of Hawkeshead works, Paisley, Glasgow.

In 1985 Thomas Lamont was amalgamated with Dawson & Downie of Cyldebank and in 1994 the firm moved to Glenrothes in Fife where they still manufacture reciprocating pumps.

These six pieces of steam powered equipment have survived the test of time and are still working after 114 years. They are a testament to the Scottish firms that designed and made them.







# Fundraisers Report - Steady Progress

## Xmas cards are a sell out



The stunning photograph kindly provided by Colin Lane, a professional in the pay of the Liverpool Echo was the inspiration for the 2017 "Danny" Xmas card and sales went through the

roof with a total of 520 cards sold in a brief three-week period.

Bob Cannell who worked with Sheila Leonard on its production said "We knew that the members and volunteers would support us by purchasing cards, but it was the finding of the right picture that was vital. We were delighted when we got permission to use this image.

Sheila, who was kept busy reordering at the printers, received lots of complimentary comments about the card and how in the displaying of cards in the home the image of the "Danny" stood out from all the usual Xmas scenes.

The team are now looking for a suitable image for a 2018 card.

## Sales Growth

Sales of other items continued well with Edgar Hodges prints achieving over 100 sales of its 150 print run and the paperweight at over 150 sales of its 250 limited edition. The paper weights proved very popular as a Xmas present with one customer buying 6 for his friends and relatives Xmas stocking. The paperweights were sold or given to customers all over the country and one even resides on a desk in the offices of the International Olympics Committee in Lausanne, Switzerland.

The fundraising team are now actively looking a new range of items for sale, talking to suppliers and looking for the best deals.

Les Green (Trustee) said "We are "feeling our way" in the market on a very limited ability to spend with all stock purchased from revenue created so we look for suppliers who offer small minimum quantities of quality products that the customer will want to retain as a memento of their experience"

## On Board Raffles

On board raffles have again proved to be a very popular and successful venture with the first prize of a good quality malt whisky being a good draw. The sales pattern is now established as the sales staff don't go around immediately but wait for the visitors to get comfortable in the seats, visit the galley for their first drinks and take their first photographs. Friendly rapport and banter is the order of the day and the exercise combined with merchandise sales normally increases customer spend on board by a

further £4 to £5 per cruise as well as adding to the customers enjoyment of the day.

Our most successful day last year was on the Cruise to Acton Bridge Steam Weekend. We went up the River Weaver on October 6th and the total raised by the Fundraising Team was just under £290.00. We feel its well worth the effort of our volunteers in joining these cruises as it turns out to be an excellent way of raising much needed funds.

## Runcorn Framers raise £300

In a unique fundraising idea Runcorn Framers made



use of their shop to display a framed Edgar Hodges print and offered passers-by and customers the opportunity to win it in a raffle.

Raising £300 for DAPS coffers, the print was won by local man John Bignall who had a personal connection to the vessel as his relatives had worked on board her. The story was picked up by local press and is being featured in the "Warrington South" monthly magazine.

This latest funding idea is just one of the fundraising ideas emanating from Runcorn Framers as prints, paperweights and badges are sold in the shop whilst Chris Jones (joint proprietor) produces pencil drawings mostly of tugs that are sold by the DAPS team on board and at presentations.

Chris in his youth spent many hours around Runcorn Docks, photographing and painting ships and tugs, the "Danny" being his favourite especially in her last days of service.

## Working in partnership

Chris who runs the business with his wife Sara have been supporters of the "Danny" from the very earliest days of DAPS when they joined the society immediately on hearing about the project in the local press and have since booked cruises on board her. They currently offer members a discount service on framing which has peaked with the Edgar Hodges promotion by DAPS fundraisers.

Chris Jones said "Sara and I with running our own business have little spare time but we feel that the "Danny" is such a beautiful unique ship that when we can, we are proud to support her"

Les Green, Trustee (fundraising) said "The relationship with Runcorn Framers is another example of a heritage attraction working with local businesses to mutually support each other and demonstrates, albeit in a small way, how restoration projects such as the "Danny" benefit local economies."

## Learn with us

Once again, building skills and awareness amongst young people features as an important part of learning programme in 2018. This year, we have increased the number of engineering student placements from Hugh Baird College almost threefold. The experience has been an eye opener for them, supporting their classroom-based learning with hands-on experience very different to that they will get anywhere else. They have gained not only new knowledge and confidence, but also, and in a short time, a strong affection for the Danny and an appreciation of her history.

This year will also see a pilot programme of work placements for young people on the verge of careers in travel and tourism. Eight young people, working towards their gold level Visitor Economy Passport, will train with us and support our stewards over the busy early summer period in Albert Dock.

After excellent feedback but slow takeup of our schools programme last year, we are pleased to be almost booked out for cruises already, with good availability of workshops in Liverpool and on the Weaver.

For the first time, we are offering cruises within the North Liverpool Docks, an exciting opportunity for local schoolchildren to get a glimpse of a working dock while learning more about the history and geography, engineering and design of their local docks, on a steamship that would have been towing barges there over 100 years ago.

Meanwhile, six partner schools in Halton are working with us to interview figures from the Danny's history and to go on a cruise on the Manchester Ship Canal as

far as Runcorn, exploring their local area on board the vessel they will have heard so much about. Their responses to this experience and to the Danny's story will be exhibited in the Brindley Arts Centre in Runcorn November 8th – 23rd.

We also have a new offer of school cruises and workshops on the Weaver – we've offered four in June, so if you know any primary schools in the area, do encourage them to take the opportunity of a cruise or workshop on the Danny.

There are more events for communities and families – two family cruises, days of family activities in Liverpool, Acton Bridge and on the Weaver, a community open day showcasing traditional rope skills, song and storytelling, activities and trails for children, open days, a reunion of crew from the Manchester Ship Canal Company and an exhibition at Lymm Heritage Centre.

We are also collaborating with folk groups to host events at Acton Bridge and Canning Dock, and hosting an art exhibition and chance to try out maritime sketching skills with Weaver Vale Arts Society at Acton Bridge in August. We're hoping to build on the great experiences that sea cadets had with us last year, and to welcome more of them on board this year.

We will also work more closely with local playschemes, Merseycare and organisations for the deaf and the blind to improve access to the Danny for everyone in the communities we serve.



Sea Cadets get kitted up to visit the engine room



Hugh Baird Engineering Students enjoy their placements on board the Danny



Danny Deck Crew practice rope throwing skills with the area sea cadets



# What we have planned in 2018...

**It's going to be a busy and fun year for all involved!**

**We have tried to create a much wider choice of cruises this year to suit all budgets and types of passengers. Prices are a lot more varied starting at £25 per person and cruise durations are from 90 minutes to a whole day. Giving this choice makes us attractive to families, coach groups and enthusiasts and means we can appeal to as many new Danny fans as possible. Already we are pleased with the interest we have had and the bookings we have had from coach groups and societies such as U3A and Probus.**

**Some of the highlights from our 2018 timetable are of course the unique cruises we offer and the routes we will take along the picturesque River Weaver, but we also have some interesting days out planned whilst we are static...**

---

**JULY 13**

## The Laird's Explorer

**Ellesmere Port to Cammell Laird's Wet Basin & Return**  
4.5 HOUR CRUISE / £50 PERSON

Visit the birth place of the Danny! The Danny was built by a fore-runner to the world famous Cammell Laird ship yard called the Tranmere Bay Development Co which was a 50/50 JV between the Danny's engine builders, John Jones and Camel's. The slipways where the Danny was launched were originally on land reclaimed in Tranmere Bay and this later became the site of the large wet-basin or dock at Cammell Lairds.

Special permission has been granted by Cammell Lairds for us to have the river gate to the basin removed near to High Water and for the Danny to enter the basin for a short circuit of the dock and get as close to her birthplace as possible. This is also a great opportunity to get up close and personal to a real working ship yard and maybe examine progress on the new Antarctic Research Vessel being built there, the RRS Sir David Attenborough.

---

**JULY 21 & SEPTEMBER 1**

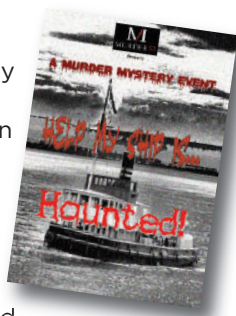
## Help My Ship is Haunted

1PM

A static Murder Mystery event created especially for The Danny by leading UK Murder Mystery Company, Murder57. Take part in an atmospheric and fun Murder Mystery in the heart of the city at the iconic Albert Dock, Liverpool on a unique venue.

Murder57 are well-known for their dramatic performances and encourage participation from their audience, so expect to play a role in the mystery as it will be your responsibility to unravel the sinister happenings on the ship. The event will be lots of fun and will make a great occasion for a group to come together for a celebration.. Group bookings are welcomed.

Go to [www.murder57.com](http://www.murder57.com) to book.




---

**AUGUST 7 & SEPTEMBER 25**

## Old Quay for Orders

**Action Bridge via Runcorn to Ellesmere Port**  
£50 PER PERSON

The Daniel Adamson spent most of her active life based at the workshops and marine base of the Manchester Ship Canal Co at Old Quay, Runcorn. All traffic tugs, dredging and maintenance craft were based at the extensive yard which at one time included a gate shed, pattern shed, foundry and various workshops and offices to support the operation and maintenance of the 36 miles of the canal.

If there was no towing work for the tugs they were often sent to "Old Quay for orders" to await their next assignment.

Today the workshops are gone but the historic quayside and slipway still survive. After enjoying the scenery of the Weaver navigation as we make our way through the stunning Cheshire countryside we will sail passed Danny's old berth at Old Quay before turning and making our way to our destination at Ellesmere Port.

---

**AUGUST 3,4,5 ACTON BRIDGE & AUGUST 23 & 24 ALBERT DOCK**

## Folk Days on The Danny

2PM-6PM / FREE

During dates in August we have invited a number of folk groups to use The Danny as their venue for the afternoon and invite as many of their followers as possible to come and experience music aboard.

**SEE MORE DETAILS ON PAGE 14**

---

**JUNE 16 & 23**

## Gin Tasting Days

ALL SOLD OUT

This will be our first for 2018 and already it has proved a popular event. The event will include samples of gin, a gin quiz, music from a live band and canapes.

**Please help us to spread the word, we would encourage more group bookings, so if you know of any groups or are part of one, please suggest a cruise on us as an idea for a day out. Email [georgia.hayes@danieladamson.co.uk](mailto:georgia.hayes@danieladamson.co.uk) to arrange a group booking.**



# 2017 in Photographs...

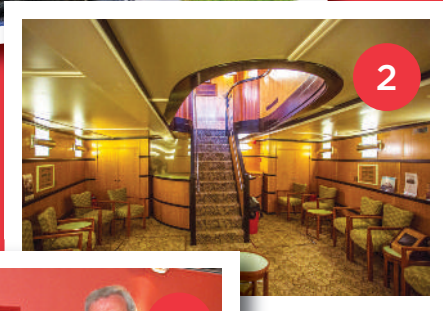
Our biggest and proudest year for award's so far! The Daniel Adamson did us proud throughout 2017 and gave us some wonderful moments to share with you all.



1



7



2



3



8



4



9



5



6



10

1. Cruises on the River Weaver
2. Our saloon
3. Transport Trust Preservationist of the Year Award given to our Chairman Dan Cross
4. HRH Princess Royal awarding us with Flagship of the Year by National Historic Ships
5. Our Singing Waiters, who can be hired for corporate events and parties
6. Our teddies who are part of our family fun
7. The Port Sunlight Sea Dogs entertain us again on The Danny
8. Our Patron Paul Atterbury visits The Danny
9. National Historic Ships Award 2017
10. We ended the 2017 on a high as we were given An Engineering Heritage Award by The Institute of Mechanical Engineers. The ship then left Albert Dock for its busy winter maintenance period



## DAPS Presentation Team and their work

**Georgia Hayes, Marketing Manager, puts the tough questions to Les Green, Trustee –Fundraising, on the work of the presentation team currently promoting the “Danny”**

**GEORGIA** “The presentation team have been out and about talking to groups with a slide and film presentation for about 15 months now. How many of these events have you now done?”

**LES** “The first point I need to make is that the “Danny” is a marvellous story and the more people out there telling that story the better. To start with prior to HLF funding and the full restoration it was Dan Cross and Stuart Wood who started this; what we have done is to put extra resource in to the project including Cathriona Bourke (Education) and dramatically update the presentation. Stuart with his high profile as BBC Radio Merseyside shipping commentary added significantly to the attraction – people wanted to see the face behind the voice. It was really Ray Hines in late 2016 who saw the opportunity to greatly expand the opportunity and he began contacting groups and persuading them to place bookings and subsequently it has escalated from there. As you know increasingly now some bookings come in via the website and yourself so cumulatively up to December 2017 the team had done 22 bookings and we have 13 on the books already for 2018 and more enquiries coming in ”

**GEORGIA** “What sort of groups do you present to and how many people attend?”

**LES** “To date we have presented to mostly groups from the U3A or University of the Third Age to give it the full title but really it is to anyone who wants to book us. We have presented to historical societies, canal societies, model boat clubs, professional and business groups (Probus) whilst we have even had a booking from a wine club. The audiences are generally retired and the most we have presented to in one session was 120 at St Helens U3A, almost as many at Clitheroe U3A and 140 split into two sessions on one afternoon at Hoylelake U3A due to room capacity. The other groups tend to be smaller and some want only an after dinner or lunch speaker.”

**GEORGIA** “You have worked at the sharp end of industry for many years and have given presentations many times, how difficult is it presenting to so many people?”

**LES** “It is very much easier as the subject is very much non-controversial and audiences are keen to listen to what you have to say. The other fact is that the DAPS presenter has the knowledge, he or she is the expert but what we have done is where there may be good local knowledge such as Ellesmere Port we take along experienced ex ship canal men like Colin Leonard or John Huxley to pick up those questions we may not be able to answer. The audience really appreciate that approach. In fact the biggest problem we usually encounter is deafness and some time even with the volume of the “mike” at maximum some still can’t hear fully”

**GEORGIA** “How many volunteers are involved and how do you go about putting on a presentation?”

**LES** “There are currently five volunteers who have carried out presentations and we have two more who have expressed an interest to be involved. We like to have at least two volunteers present on the day, one presenting and the other assisting in the set -up, selling merchandise and answering questions at the end. A professional presentation is everything; we like to arrive early, set up our display with prints, sometimes the model and merchandise to sell. The second role is to place leaflets on every chair advertising cruises for individuals to take away. Finally there are the “gremlins” in the electronic system to sort out and then be ready when the audience arrives. Just as

important is the support we get from Ray Hines contacting potential customers, Sheila Leonard and Cathriona on admin and keeping the presenters updated”

**GEORGIA** “How was the presentation developed?”

**LES** “Very much by teamwork; Sheila Leonard, Colin Leonard and I took the very first presentation as done by Dan some years ago prior to full restoration and developed a base model which we used a few times. Then we invited all the team to review, add, detract and generally improve it. Bob Cannell had a big impact on the Manchester/Salford Docks side of the work and Cathriona reviewed it from an educational point of view. Initially it was over an hour long but then because many organisations had room hire constraints we produced a 45 minute presentation for the customer’s needs. It was important that each presenter felt comfortable with what he was delivering and could place emphasis where his own expertise lay”

**GEORGIA** “What response have you had from the customers?”

**LES** “Audiences have been very receptive and we have had many good comments. We have been told that one organisation that grades their speakers has now put our work into the top bracket. A comments sheet for organisers is to be used in 2018”

**GEORGIA** “What elements of the DAPS business model do you think this activity supports?”

**LES** “Well certainly education and outreach are the immediate areas which come to mind but also marketing and public relations with the monies raised going into fundraising income.”

**GEORGIA** “What evidence do you have to substantiate what you say about publicity and marketing?”

**LES** “This is the cynic’s question I have had before. Put simply and firstly, the old expression “there is no such thing as bad publicity” certainly applies and we have presented now to probably around 2,000 people in the North West. What we have to remember is that these are mostly middle and old aged audiences and are likely to book cruises; in tourist industry circles these audiences are the “dinkies” (double income -no kids) or the “grey pound” Geographically we try to get bookings that are with 1hour travelling distance or 45/50miles of Ellesmere Port because that was the distance the marketing consultant recommended by the HLF told us people would travel for a day out.

“On the question of whether we can substantiate the number of cruises booked we can’t but neither can anyone maintain that we have not brought people to the vessel. Nobody knows without an extensive time consuming survey but there is word of mouth evidence coming back from volunteers who have spoken to people on board that they first learned about us at these events and also Dan referred to this effect in the AGM report”

“The marketing budget is small, as you know, and every free or cheap means of getting the message out there has to be addressed. The way we go about maximising the opportunity to bring people on board is firstly to leaflet every person on the room hoping to attract individual and family visits. Secondly we have an information sheet distributed to all the organisers of group visits these organisations have, as some, for example have transport groups, art groups and social groups.



**GEORGIA** “How does the event contribute financially and how does this compare to other means of fundraising?”

**LES** “Ray Hines negotiates with the potential customer and we aim for a flat fee of £70 but will request higher should there be very large numbers, and then on top of that we sell memorabilia and get occasional donations so the reality is that we average well over £100 per event. As this activity with both travelling, setting up and the actual presentation takes 4/5 hours for two volunteers it means that we are, by simple maths, achieving some £100 plus per volunteer day.

The nearest comparison probably on use of volunteer hours is when we are static in Canning Dock and I have stood there alongside many others on those bleak November and December days with a force 8 North Westerly blowing down the estuary, and 7 or 8 willing but frozen volunteers often taking a lot less than a presentation. In summary the whole team agree that it is a good return per volunteer day and enjoyable”

**GEORGIA** “What are your plans for the future?”

**LES** “Naturally we will continue to fine tune the current offering but in addition we are being requested to present more specifically on the Manchester Ship Canal naturally with the “Danny” brand stamped right through it. We have researched and found that there is no one on the circuit that does this so we have begun the work to develop a very good presentation. Again the same team as before are involved but we have had excellent support from an expert on the early canals especially the predecessor of the ship canal, the Mersey and Irwell navigation. Hopefully this will be completed by Spring to launch on the market.”

**GEORGIA** “Thank you for your time and support”

**Talks can be arranged on the ship as part of a Talk, Tour & Lunch Package at £15 per person, or talks can be given to groups in their own venues.**

**To arrange a talk, email: [Georgia.hayes@danieldamson.co.uk](mailto:Georgia.hayes@danieldamson.co.uk)**

## FEEDBACK

**We appreciate all the feedback we get and try to act on as much as we can, thank you to everyone who has written a review on TripAdvisor, this really helps our profile as a new tourist attraction in Liverpool and is an important way for us to be recognised.**

**Here is some further feedback from our new customers;**

### **CLITHEROE U3A**

On behalf of Clitheroe U3A can I say a big thank you for the very interesting talk you gave today. The dedication and passion of the team who have managed to rescue this ship is wonderful to see. Quite a number of the members I have spoken to after your talk are keen to have a sail on the Danny. It is very likely that we will be arranging a visit to you, hopefully next year. I will also pass on the information to the WI I am a member of as they are always looking for ideas for a summer outing. Very best wishes to all your endeavours with this fantastic project.

### **MOTABILITY**

Last October I arranged a unique and wonderful event for 40 of our suppliers on The Daniel Adamson, a 1920's restored steamship docked in the River Mersey, Liverpool. The day was truly special and included our guests being treated to canapes and cocktails and surprised by singing waiters! Aside from the entertainment, just being on board 'The Danny' itself was a real treat for our guests to experience along with hearing about its fascinating history. It was a pleasure to work with the staff and volunteers on board who made our day so memorable and looked after us so well.

### **PEEL PORTS**

We have used the Daniel Adamson for corporate events on a number of occasions. We have found them to be professional, helpful and informative and a

pleasure to work with. We would thoroughly recommend them as a unique alternative for corporate functions

### **BIBBY LINE**

Last November, a Bibby Line reunion was held on board the Daniel Adamson, or the 'Danny' as she is more affectionately known, in the Albert Docks, Liverpool. The event, attended by over 70 guests, was made truly memorable by the warmth of the welcome we received from the 'Danny' volunteers, some of them ex-seafarers themselves, who went out of their way to ensure their guests were made more than comfortable whilst on board. The 'Scouse' lunch was enjoyed by one and all, and the bar in the beautifully fitted out lower saloon provided a full range of alcoholic and non-alcoholic drinks, including the special 'Danny' beer, during the afternoon. The guided tours of the navigating bridge, boiler room and engine room, under the strict control of the 'Danny's' crew, were greatly appreciated by the retired deck and engineer officers attending the event. Recently presented with an award from the Institute of Mechanical Engineers, the 'Danny' and all her loyal and hard-working volunteers have finally been recognised for their contribution in restoring and maintaining this marvellous example of our maritime heritage for future generations. No visit to Liverpool can be considered complete until you have visited the Daniel Adamson, or sailed in her for a river trip during the summer months.



## CHAIRMAN'S PIECE

### Dan Cross

Dear Members,

Firstly a Very Happy New year to you all and I do hope you all managed to have an enjoyable and peaceful break over Christmas.

Our ever growing band of volunteers were soon however, back down aboard the Danny, hard at it with the first working party taking place on the 2nd January.

Work has been concentrating prior to Christmas in getting some valves repaired and re-tested ready for our light move under steam on 20th December, the same day some of you joined us for a pleasant couple of hours where the Danny was recognised for her engineering heritage in the form of an award being made by the Institution of Mechanical Engineers.

All that seems a long way off now and the boiler has been drained and all fire bars removed followed by a thorough cleaning out of all spaces for our internal boiler inspection in early February which she passed with flying colours and then two weeks later our "in steam" inspection with safety valves lifting as planned and witnessed by our boiler surveyor and our MCA surveyor to their satisfaction.

In between all this our friends from aboard the "Brocklebank" have been assisting in checking the Main Engine Timings and our engineers have been attending to a large list of jobs as the time available before we re-enter service at Easter draws nearer. This has included adjustment pieces added to the control arms, work on the thrust bearing, condensers and the installation of a talk back system between the bridge and engine room & boiler room to name but a few of the jobs.

A team lead by Frank Brown and Allan Thomas have been cleaning the engine room and boiler room and painting the vessel above and below decks. It has already made a huge difference to the engine room and on deck they have done very well to get so much done during the winter months.

As you will all by now know, our time table has now been launched and a large variety of cruises are available to suite all tastes and pockets. I am delighted with the pre-bookings already taken and the interest shown in the Weaver especially by coach and tour operators. I look forward to seeing some of you during the year as and when I am able to volunteer. You may well have seen our adverts in magazines such as Cheshire Life/ Wirral Life, Towpath Talk and Sea Breezes to name but a few. Huge thanks to Georgia in the extensive marketing operation underway.

Andrea has been exceptionally busy and this has included her taking over the day to day financial affairs of the Society and also dealing now with HLF and submitting claims etc. Andrea has been very well supported in this element of the role by Louise Parnell

who has taken over on the board as Finance Director and brings a wealth of knowledge and experience with her. Some of you would have met Louise at our well attended AGM. Finally thanks to Cathriona and her Education team. This year we have huge interest from schools and our dock cruises for school kids are all booked up and those set aside on the Weaver for schools use are practically full also. Cathriona has also been instrumental in attracting work placements to the Danny and thanks to Ray Hines and his team for accommodating them and taking such a patient and structured approach with them.

### MEMBER EVENTS:

With the 2018 program selling already I wanted to try and give you all plenty of warning for a couple of events.

Firstly, on **FRIDAY 6th JULY 5pm - 10pm. Sutton Weaver Swing Bridge.** We are holding a Members and volunteers ONLY BBQ & Picnic at Sutton Weaver, Frodsham. We plan to make this a fairly informal event but a chance none the less for all members and supporters new and old to bring your deck chairs and food and spend a few hours socialising and generally enjoying what we hope will be a great few hours. No doubt some music will appear in some way or another. We will supply several BBQ's and charcoal, all we ask is you bring whatever food you want to consume (and maybe share) and we will provide the location, the ship, the bar and a large Marquee should it....well you know... (I don't even want to say it). Obviously lots of seating aboard the Danny but there is a good, grassy area at Sutton Weaver Swing bridge so feel free to bring a deck chair or blanket

**AGM - Sunday 30th September 2018. Anderton Boat Lift. 10:30 for 11:00 start.** To be held in the lower Marquee at Anderton. Due to only opting for independently examined accounts for 2017-18 we can safely predict our AGM's will return to the more traditional time of September. Nearer the time we will also be advertising a special Members cruise to follow the AGM but the details will only be confirmed as the year draws on. Watch this space as the saying goes!

Please keep checking our website and social media for regular updates and of course, tell your friends to book at trip aboard the Danny. Something not to be missed.

Finally, our long awaited DVD is now in the final stages of the edit and our very own Patron, Paul Atterbury has last week recorded the voice over. When we have the final release date and price we will let you know.

**Here's to a successful season.**





## Easter Gathering – A Fantastic Mix of Colourful Boats and Music

**FRIDAY 30 MARCH TO MONDAY 2 APRIL**

Along with the boats, music and entertainment always plays a key role in the gathering and this year's programme is looking packed.

At the BMS meeting on Friday evening, David Lowe, well known to us as Chairman of the Commercial Boat Operators Association (CBOA) will be speaking on Modern Freight Carrying by Water. Saturday night's folk headliners will be Chris Sherburn and Denny Bartley with Emily Sanders who will be bringing their unique sound and collective personality to the evening, with support from local band The Old Firm. You will find 2 free tickets in your boater pack and additional tickets will be available from reception at £8 each.

Over the weekend you can also look forward to award-winning musician Phil Underwood who will be sharing his traditional and contemporary canal songs, and Graham Bellinger will be there with his eclectic repertoire. Lunchtime music and song sessions with The Raven Folk Club and Dave Russell & Friends. On Saturday afternoon, The Hungry Horse Folk Club will be with us. Children and families can enjoy creating their own music together with acclaimed musician and story teller David Gibb. The regular Sunday evening Come-all-ye with MC Ray Butler will take place in the Rolt.

The museum will be open for visitors throughout the weekend, with costumed interpreters bringing the Porters Row cottages and the Slipway to life plus a whole host of family activities. There will be opportunities for visitors to go "Behind the Scenes" in the Large Object and the Small Object Stores plus the opportunity to visit the museum's new boat store where you can see the vessels raised from the Upper Basin last year. If you would like to express early

interest in visiting the store please email [nationalwaterwaysmuseum@canalrivertrust.org.uk](mailto:nationalwaterwaysmuseum@canalrivertrust.org.uk) and Michelle Kozomara or Charlotte Anderton will be in touch before the event.

The museum's trip boat, Centaur, will be joined by accessible boat Over the Rainbow this year which will be offering visitors the chance to go through Ellesmere Port's historic locks into the Lower Basin.

There is still time to register your boat for the gathering. The form is available at [canalrivertrust.org.uk/nwm](http://canalrivertrust.org.uk/nwm) or by telephoning the museum on 0151 355 5017. To assist with your event preparation, the pontoon leading to the Upper Basin will remain open on Friday afternoon for your arrival and be open from 4pm on Sunday if you would like to leave early.

**For more information on timings please visit [canalrivertrust.org.uk/nwm](http://canalrivertrust.org.uk/nwm). We look forward to welcoming you.**

### VISITING BOATS

Easter is an exciting time of the year for us too and we always look forward to welcoming so many of you. We would like to extend this invitation for historic narrowboats to the rest of year by offering free moorings in the Upper Basin. During your stay we would like to invite you to share your experiences with our visitors.

**Places are limited and must be booked in advance including agreed arrival and departure times. Please contact the museum for a booking form [nationalwaterwaysmuseum@canalrivertrust.org.uk](mailto:nationalwaterwaysmuseum@canalrivertrust.org.uk) 0151 355 5017 or for more information**



# FOLK ON THE BOAT

The Daniel Adamson Preservation Society have invited six folk clubs, from both sides of the Mersey, to run their own folk session **ABOARD** our award winning ship. All these sessions are absolutely free!

Why not come along with a song to sing? You are guaranteed a warm welcome. There will be a bar and galley cafe, and undercover seating areas. As well as the music, you will have a chance to explore our amazing vessel!

Folk afternoons from 2pm - 6pm run by real local folk clubs with their own regular singers, special guests and with open mic sessions.

## River Weaver

### ACTON BRIDGE

FRIDAY 3 AUGUST : 2PM-6PM

#### Runcorn Folk Club

A warm, friendly club, meets each Monday

[www.folkattheprospect.co.uk](http://www.folkattheprospect.co.uk)

CONTACT TONY ON 01928 561431

SATURDAY 4 AUGUST : 2PM-6PM

#### Northwich Folk Club

Since 1977, friendly, broad outlook, meets each Friday

[www.northwichfolk.co.uk](http://www.northwichfolk.co.uk)

CONTACT PETE ON 01606 74258

SUNDAY 5 AUGUST : 2PM-6PM

#### Frodsham Folk Club

Always a great night, meets every Wednesday

[www.frodshamfolkclub.co.uk](http://www.frodshamfolkclub.co.uk)

CONTACT GRACE ON 01925 740422

## River Mersey

### CANNING DOCK

THURSDAY 23 AUGUST : 2PM-6PM

#### Bromborough Folk Club

Always a great night, meets every Wednesday

[www.bromfolkclub.co.uk](http://www.bromfolkclub.co.uk)

CONTACT JOHN COLEMAN 0151 334 0759

AND

#### Everyman Folk Club

Cross Keys pub, Liverpool. Club of ex-Spinner Hughie

Jones and wife, Chris

[sites.google.com/site/theeverymanfolkclub/home](http://sites.google.com/site/theeverymanfolkclub/home)

CONTACT CHRIS ON 0151 709 3336.

FRIDAY 24 AUGUST : 2PM-6PM

#### Hungry Horse Folk Club

Ellesmere Port club. Exciting and varied Thursday nights.

[www.hungryhorseacoustic.com](http://www.hungryhorseacoustic.com)

CONTACT JOHN ON 07981 639336

# Static Events in Cheshire

WED APRIL 11 : 13:00-16:00

### SUTTON WEAVER

#### Family Welcome at Sutton Weaver

Children are invited to follow the teddy bear trail and try their hands at some Danny-inspired crafts. All the family are invited to take a free tour round all areas of the vessel with our welcoming and knowledgeable volunteers. Parking is limited, so we recommend drop offs, public transport or coming on foot if you live locally.

SAT MAY 19 : 11:00-16:00

### SUTTON WEAVER

#### Story, Song, Traditional Skills, Family Activity

Former crew members demonstrate rope skills, volunteers invite you on a tour of the vessel, children can make Danny badges and there will be a live presentation of the Danny's history through song and storytelling. Parking is limited so we recommend drop offs, public transport or coming on foot if you live locally

SUN MAY 20 : 11.00-13.00 & 14.00-16.00

### SUTTON WEAVER

#### Open to the Public & Manchester Ship Canal Crew Reunion

You are invited to take a tour of the vessel, led by our knowledgeable and friendly volunteers between 11.00 and 13.00. From 14.00 - 16.00, we welcome former workers with the Manchester Ship Canal for a reunion on board the Danny. Former engineers and deck crew from the Danny will be here to host. Parking is extremely limited, so we recommend drop offs, public transport or coming on foot if you live locally

SAT APRIL 7, THURS 2 AUG, THURS AUG 2 : 11.00-16.00

### ACTON BRIDGE

#### Free Open Days & Guided Tours

Our volunteers will be available to give you a free tour of the ship, explaining the history and the restoration story, you will get to see all parts of the ship including the wheelhouse and the engine room. Hot drinks are also available.

WED AUG 15 : 11.00-17.00

### ACTON BRIDGE

#### Weaver Vale Art Society Exhibition: Meet & Sketch with the Artists

Welcome on board the Danny to see not only the vessel but also the work of the artists from the Weaver Vale Arts Society. The artists invite you to see their work, to talk to them about painting landscapes, industrial environments and other specialisms. Also to join them in sketching on board and along the riverside. Clipboards and pencils provided. Hot drinks and full bar available.

THUR AUG 16 : 11.00-17.00

### ACTON BRIDGE

#### Weaver Vale Art Society Exhibition: Meet & Sketch with the Artists

Welcome on board the Danny to see not only the vessel but also the work of the artists from the Weaver Vale Arts Society. The artists invite you to see their work, to talk to them about painting landscapes, industrial environments and other specialisms. Also to join them in sketching on board and along the riverside. Clipboards and pencils provided. Hot drinks and full bar available.